

D-Show

Expandable control surface

Features

- Base configuration provides 24 input faders (an 8-fader Main unit, plus one 16-fader D-Show Sidecar); expandable up to 56 faders with two additional D-Show Sidecars
- Fully compatible with all VENUE I/O components, including FOH Rack and Stage Rack, and the all-in-one Mix Rack
- Employs the same D-Show software as all VENUE systems for complete show file portability between systems (running D-Show 1.0 or higher software)
- Easy-to-navigate “strip style layout,” with per-strip access to EQ, inserts, dynamics in/out, and safe switches
- Multi-segment, multi-color LED input and dynamics metering per channel
- Dual row of encoders allows simultaneous control of multiple functions, such as level and pan, for stereo auxes
- Eight output faders and rotary output encoders allow control of two group master choices at one time, or a group masters choice, plus plug-in control
- Discrete banking between Main unit and all Sidecars
- Integrated trackball and monitor mount (monitor sold separately)

Digidesign® VENUE is a state-of-the-art live sound production environment comprised of high-quality components that work together as one system to deliver studio-grade sound and processing, powerful performance, unprecedented reliability, and complete ease of use, with maximum flexibility. The flagship VENUE D-Show® control surface is the result of several years of design and ergonomic refinement by the engineers at Digidesign, and was developed with input from the world’s leading mix engineers in touring sound, theater, houses of worship, and fixed installations to provide superior ease of operation, flexibility, and reliability. D-Show is fully expandable, easy to use, and provides complete creative control of even the largest audio productions from one centrally located mixing position.

Expandable Form Factor

For large-scale productions (and to minimize the need for banking during operation), you can expand the D-Show control surface’s input fader count to accommodate up to 56 faders with additional 16-fader D-Show® Sidecars; the D-Show Main unit can support up to three Sidecars (it ships standard with one detached Sidecar). You can attach the Sidecars to either side of the Main unit to function as one extended control surface, or physically place the detached Sidecars anywhere at the mixing position for the ultimate in setup flexibility.

One Software Platform—Total File Portability

All VENUE components operate under one common software platform—D-Show® software, the industry’s easiest yet most comprehensive control software. D-Show software sets new standards in operational efficiency and workflow, giving you instant access to and full control over any function of the system. Just a simple button push on the control surface or click from the screen gives you access to inputs, outputs, show files, snapshots, patchbays, plug-ins, and more. And because all VENUE systems share this same software platform, you can create and load show files for use on any VENUE control surface; no need to learn new software or build new show files if you switch VENUE control surfaces or re-scale your system.

Full Hardware Compatibility

The D-Show control surface is fully compatible with all existing VENUE hardware components, including FOH Rack, Stage Rack, and Mix Rack, allowing you to scale your system and interchange components as needed with ease. Sound reinforcement rental companies needn’t fear product obsolescence as demand grows; simply add additional D-Show Sidecars or even the smaller D-Show Profile™ control surface to your current arsenal of VENUE I/O hardware, and easily scale the mixing surface to meet client needs without changing existing workflows.

Unique Yet Familiar Features

D-Show offers the ultimate in tactile control with two assignable encoders per channel that allow discrete and simultaneous control of parameters, such as level and pan for stereo auxes or instant access to pre-amp gain and dynamics thresholds on a per-channel basis along with many other common controls. The control surface’s intuitive and easy to learn channel strip layout makes the transition from analog to digital workflows a breeze, with many familiar switches and controls at your fingertips.

For more information, visit your local VENUE dealer or www.digidesign.com/venue.



D-Show Main



D-Show Sidecar



Encoder assignment switches and input channel strips

D-Show Main Unit Specifications

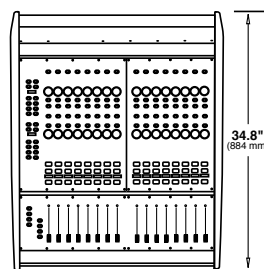
Maximum Height (front)	3.2 inches (81 mm)
Maximum Height (rear)	13.7 inches (347 mm)
Maximum Width (with endcaps)	51.7 inches (1313 mm)
Maximum Width (without endcaps)	49.5 inches (125.8 cm)
Maximum Depth	35.5 inches (895 mm)
Weight	121 lbs (55 kg)
Power Requirements	90-260 VAC, 50-60 Hz, 160 W
USB Ports (3)	USB 1.1
VGA Port	DB-15 mini-female (1024 x 768 resolution)
Footswitch Connectors (2)	1/4-inch TRS
FOH Link Connector (to FOH Rack or Mix Rack)	MIL connector
Max FOH Link Cable Length	11 ft (3.35 m)
Console Link (CAN bus) Connectors (2)	XLR3-M, XLR3-F
Console Link Cable Type	110-Ohm (digital) cable
Max Console Link Cable Length	Single cable: 25 ft (7.6 m); Total length: 75 ft (22.9 m)

D-Show Sidecar Specifications

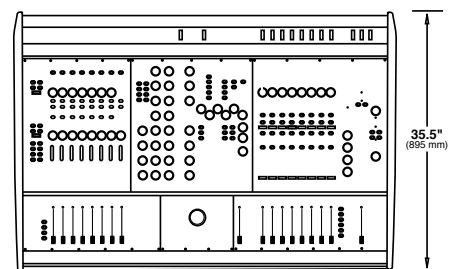
Maximum Height (front)	3.2 inches (81 mm)
Maximum Height (rear)	13.7 inches (347 mm)
Maximum Width (with endcaps)	28.7 inches (729 mm)
Maximum Width (without endcaps)	26.5 inches (673 mm)
Maximum Depth	34.8 inches (884 mm)
Weight	73 lbs (33.2 kg)
Power Requirements	90-260 VAC, 50-60 Hz, 120 W
Console Link (CAN bus) Connectors (2)	XLR3-F
Console Link Cable Type	110-Ohm (digital) cable
Max Console Link Cable Length	Single cable: 25 ft (7.6 m); Total length: 75 ft (22.9 m)

D-Show Main Unit with Attached Sidecar Specifications

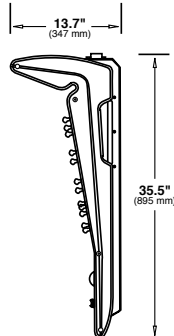
Maximum Height (front)	3.2 inches (81 mm)
Maximum Height (rear)	13.7 inches (347 mm)
Maximum Width (with endcaps)	78.3 inches (1988 mm)
Maximum Width (without endcaps)	76.1 inches (1933 mm)
Maximum Depth	35.5 inches (895 mm)
Weight	194 lbs (88 kg)



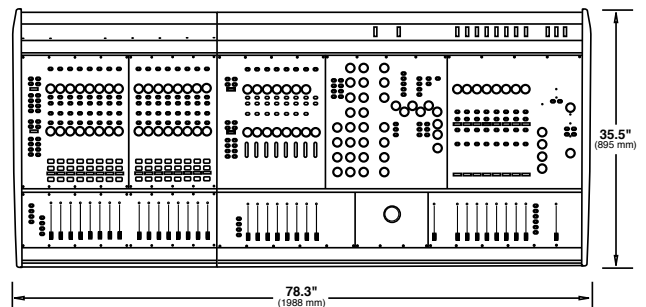
D-Show Sidecar



D-Show Main Unit



D-Show side view



D-Show Main Unit with attached D-Show Sidecar

